



**DeckWise**.com

Manufacturers of Hidden Deck Fasteners & Accessories

## BRAZILIAN HARDWOOD DECK TILES

Commercial Grade species include: Ipe, Tigerwood, Cumaru, and Massaranduba

LUXURIOUS. LONG-LASTING. EXCEPTIONAL VALUE.

Constructed from responsibly harvested premium grade hardwood remnants.

Renewable and Responsibly Harvested from Sustainable Well-managed Forests



### 1. PREP THE SURFACE

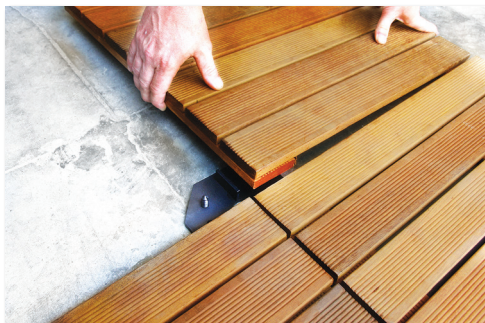
Make sure the surface being covered is relatively flat and free of anything that may get in the way of installation such as sticks, rocks or furniture. Then choose one corner of the area to begin working in. Another option is to snap a chalk line for a straight line to follow during installation.



### 2. SET FIRST TILE

Many wood-backed deck tiles are milled with four pre-drilled holes located in each corner. The Deck Tile Connector fits each of these holes with four specially designed ribbed pins (aka Pine tree fasteners). For a secure fit, simply set one of the tiles onto the preinstalled fasteners. If your corner holes are not pre-drilled, see our corner drilling instructions at:

[www.deckwise.com/deck-tile-systems-drilling-corners.html](http://www.deckwise.com/deck-tile-systems-drilling-corners.html)



### 3. SET ADDITIONAL TILES

Once the first tile is laid, proceed placing the other tiles onto the remaining pins. The Deck Tile Connector automatically sets the gap spacing to 3/8" so you won't have to worry about an uneven look.

For deck tile coverage calculator go to: [www.deckwise.com/deck-tile-calculator](http://www.deckwise.com/deck-tile-calculator)

# Connecting hardwood deck tiles is a snap!

Available in 3 colors to match install surfaces.



Shadowline Black  
Hardwood Brown  
Concrete Grey

**WiseTile™ Deck Tile Connectors** (Sold separately)  
Simply snap in place, precisely, accurately and securely over virtually any hard surface. Deck tile connectors are molded of polyethylene plastic and feature integrated 3/16" gap spacers to automatically set the perfect tile spacing. Each connector has 4 fasteners that fit into deck tile corners to connect tiles together. A pre-fabricated countersunk hole guarantees the securing of connectors to foundations when using trusted and proper fastening methods.

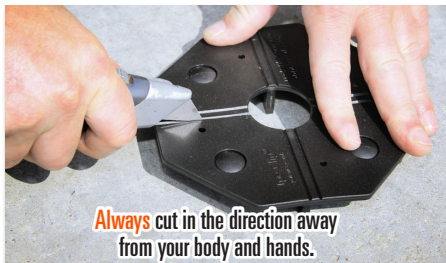
## Using Tile Connectors on edges or corners

Simply score the connector using a utility knife along the pre-molded grooves that mark the edges of the built in spacers. Bend the edges downward to snap the connector in half. Repeat the process to use a quarter of the connector to install on the corners of your deck tiles.

You can use both halves of a halved connector, or quartered tile connector on either hidden or exposed edges. You can also use the edge with the spacer to provide a gap between your new deck and any adjacent structure such as a house, fence, or wall.

DeckWise® Deck Tile Connectors have pre-drilled countersink holes ready for fastening to an existing surface or substructure.

For installation videos go to:  
[www.deckwise.com/how-to-build-hardwood-decks-videos.html](http://www.deckwise.com/how-to-build-hardwood-decks-videos.html)



## ALTITUDES PEDESTAL™ FOR HARDWOOD DECK TILES

0 - 5% Slope Compensation

Adjustable Screw-jack Deck  
Tile Self-Leveling System



Turning underutilized roof tops and balconies into beautiful spaces is now a simple accomplishment with the Altitudes Pedestal™ system from DeckWise®. Merely by utilizing our hardwood deck tile pedestals to elevate and level-off an unused area, a unique and inspiring space can be built to entertain or create a special private hideaway.